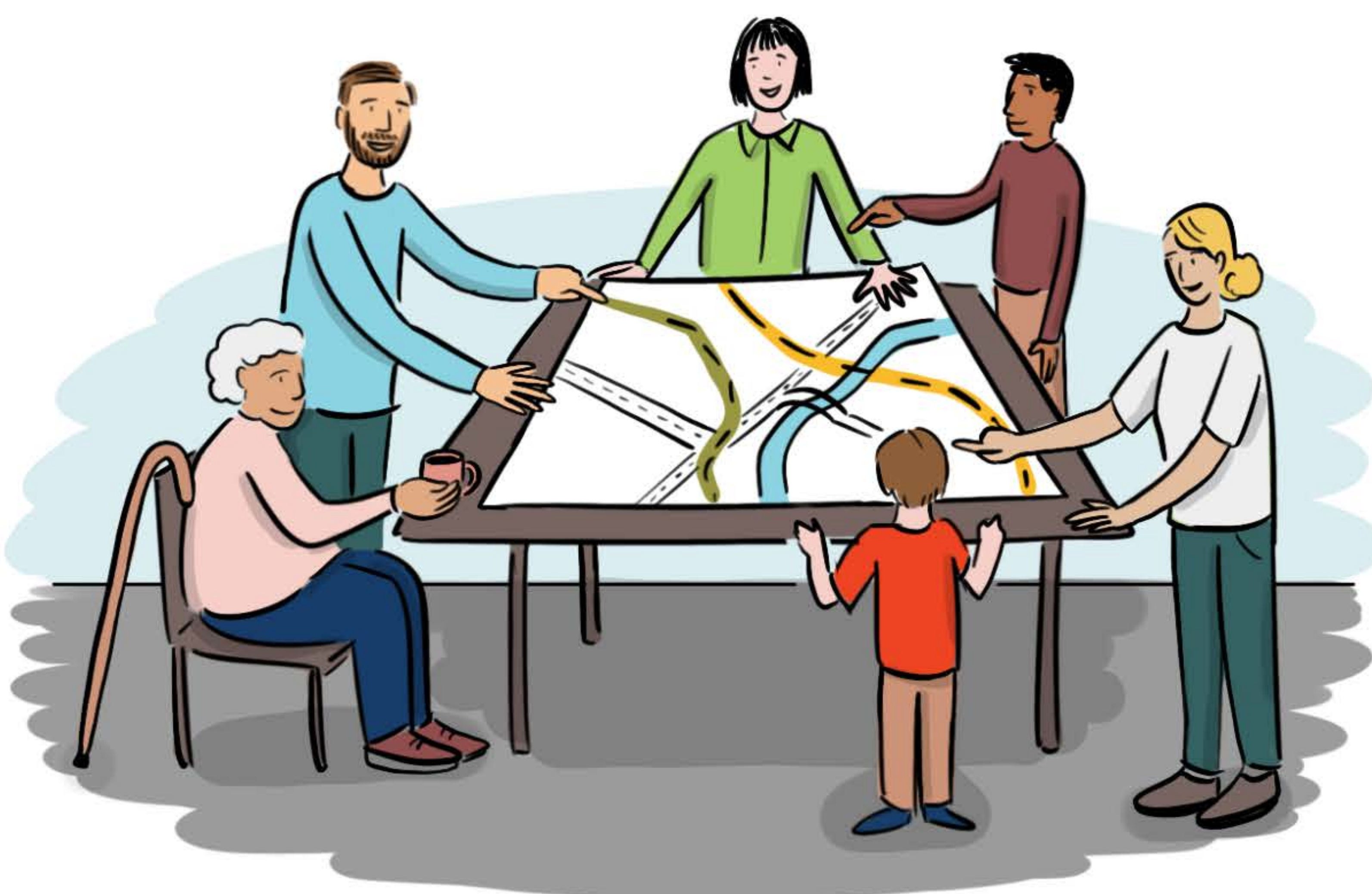


# TESLIN'S BOUNDARY EXPANSION



BOUNDARY ADJUSTMENT FOR THE VILLAGE OF TESLIN HAS BEEN UNDER DISCUSSION FOR MORE THAN 20 YEARS.



BOUNDARY EXPANSION  
AFFECTS US ALL.

Everyone who identifies as living in Teslin is affected.

THE 2020 VECTOR REPORT FOUND THAT:

- ★ PROPERTY OWNERS IN EXPANSION AREAS MIGHT BE HIT WITH HIGHER TAXES
- ★ THE TESLIN TLINGIT COUNCIL IS THE MAIN TAX PAYER



# WHY EXPAND THE BOUNDARIES?

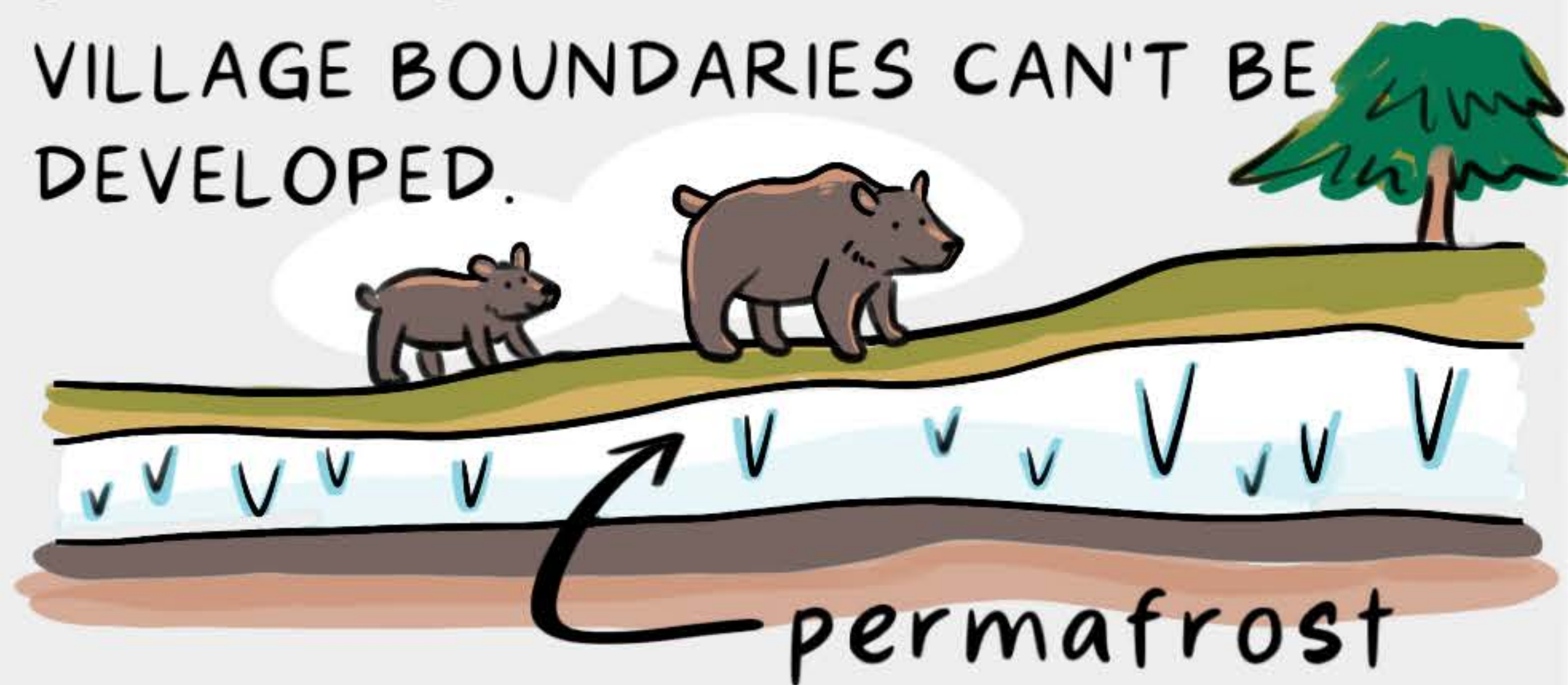
## TESLIN'S BOUNDARY EXPANSION

THE CURRENT BOUNDARIES DON'T INCLUDE EVERYONE.



Many people who identify as from Teslin can't vote or run for Village Council.

LOTS OF LAND INSIDE THE CURRENT VILLAGE BOUNDARIES CAN'T BE DEVELOPED.



THERE IS A NEED TO EQUALIZE SERVICING ARRANGEMENTS FOR THE BENEFIT OF ALL.



TESLIN IS GROWING.



Almost all new development is outside the current boundaries. This adds complications for servicing.

# PROPOSED BOUNDARY

## TESLIN'S BOUNDARY EXPANSION



 = TESLIN TLINGIT COUNCIL LANDS

 = PROPOSED BOUNDARY

 = EXISTING BOUNDARY

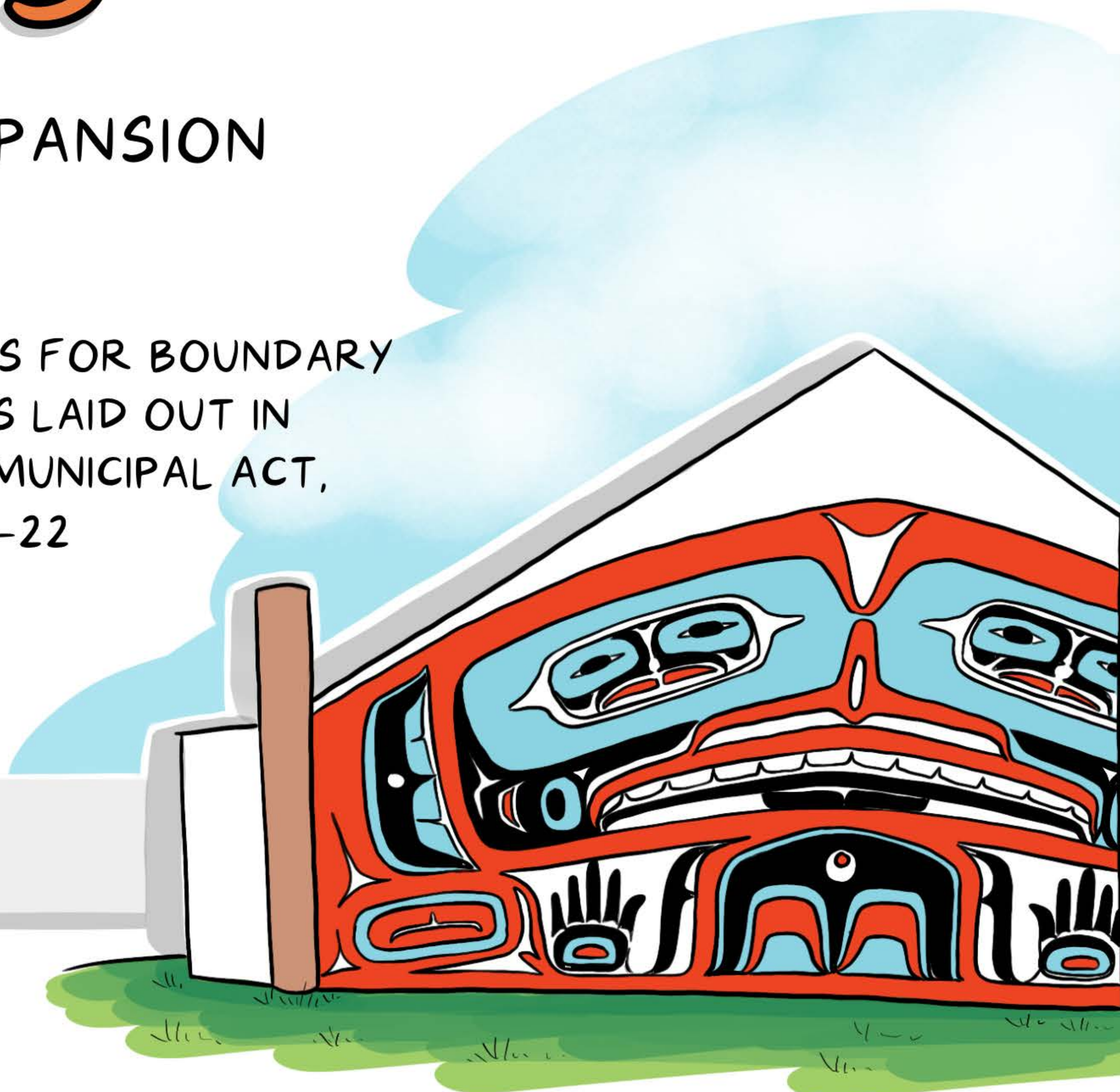
 = ALASKA HIGHWAY

# PROCESS

## TESLIN'S BOUNDARY EXPANSION



THE PROCESS FOR BOUNDARY EXPANSION IS LAID OUT IN THE YUKON MUNICIPAL ACT, SECTIONS 17-22



## TIMELINE



WE ARE HERE

JOINT COUNCIL'S RESOLUTION TO SUPPORT FURTHER RESEARCH AND COMMUNITY CONSULTATION



FOR MORE INFORMATION ABOUT TESLIN'S BOUNDARY EXPANSION PROPOSAL, CONTACT SHELLEY HASSARD, [admin.teslin@teslin.ca](mailto:admin.teslin@teslin.ca) OR 867-390-2530

BEFORE AN APPLICATION IS SUBMITTED, IT MUST BE SUPPORTED BY:

- A TTC RESOLUTION
- A VILLAGE COUNCIL RESOLUTION
- A PETITION FROM THE PEOPLE WHO WOULD BE AFFECTED